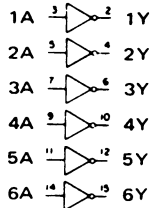
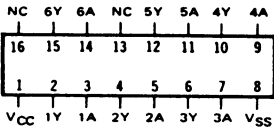


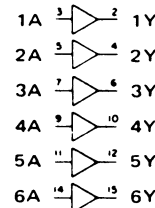
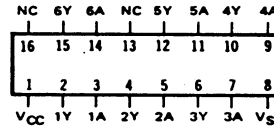
**SCL4049UB**

INVERTING HEX BUFFER



**SCL4050B**

NON-INVERTING HEX BUFFER



**STATIC CHARACTERISTICS: ( V<sub>SS</sub> = 0 V )**

PARAMETER	CONDITIONS	V <sub>DD</sub> (Vdc)	T <sub>LOW</sub> *		+25°C			T <sub>HIGH</sub> **		UNIT
			MIN	MAX	MIN	TYP	MAX	MIN	MAX	
QUIESCENT DEVICE CURRENT I <sub>DD</sub>	V <sub>IN</sub> = V <sub>SS</sub> OR V <sub>DD</sub>	5		1		0.005	1		30	μAdc
		10		2		0.01	2		60	
		15		4		0.02	4		120	
OUTPUT LOW (SINK) CURRENT I <sub>OL</sub>	V <sub>OL</sub> = 0.4V V <sub>OL</sub> = 0.5V V <sub>IN</sub> = V <sub>SS</sub> OR V <sub>DD</sub> V <sub>OL</sub> = 1.5V	5	3.7		3	6.4		2.1		mAdc
		10	10		8	16		5.6		
		15	30		24	40		16.8		

Note: \*T<sub>Low</sub> = -55°C for C / H devices, -40°C for E / S devices, \*\*T<sub>High</sub> = +125°C for C / H devices, +85°C for E / S devices.

**DYNAMIC CHARACTERISTICS: ( C<sub>L</sub> = 50pF, T<sub>A</sub> = 25°C )**

PARAMETER	V <sub>DD</sub> (Vdc)	V <sub>CC</sub> (Vdc)	MINIMUM	TYPICAL	MAXIMUM	UNIT
PROPAGATION DELAY TIME t <sub>PLH</sub> (4049UB)	5	5		60	120	ns
	10	10		32	65	
	15	15		25	50	
	10	5		45	90	
	15	5		45	90	
PROPAGATION DELAY TIME t <sub>PLH</sub> (4050B)	5	5		70	140	ns
	10	10		40	80	
	15	15		30	60	
	10	5		45	90	
	15	5		40	80	
PROPAGATION DELAY TIME t <sub>PHL</sub> (4049UB)	5	5		32	65	ns
	10	10		20	40	
	15	15		15	30	
	10	5		15	30	
	15	5		10	20	
PROPAGATION DELAY TIME t <sub>PHL</sub> (4050B)	5	5		55	110	ns
	10	10		27	55	
	15	15		15	30	
	10	5		50	100	
	15	5		50	100	

**SCL4049UB**

INVERTING HEX BUFFER

**SCL4050B**

NON-INVERTING HEX BUFFER

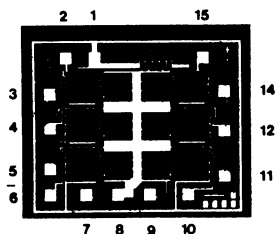
**DYNAMIC CHARACTERISTICS:** (  $C_L = 50\text{pF}$ ,  $T_A = 25^\circ\text{C}$  )

PARAMETER	$V_{DD}$ (Vdc)	$V_{CC}$ (Vdc)	MINIMUM	TYPICAL	MAXIMUM	UNIT
OUTPUT TRANSITION TIME $t_{TLH}$ ,	5	5		80	160	ns
	10	10		40	80	
	15	15		30	60	
OUTPUT TRANSITION TIME $t_{THL}$	5	5		30	60	ns
	10	10		20	40	
	15	15		15	30	
INPUT CAPACITANCE (4049UB)	$C_{IN}$	$C_{IN}$		15	22.5	pF

**DIE DRAWING**

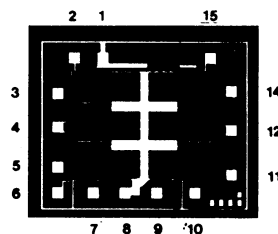
**SCL4049UB**

71 x 59 mils



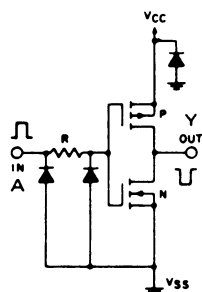
**SCL4050B**

71 x 59 mils

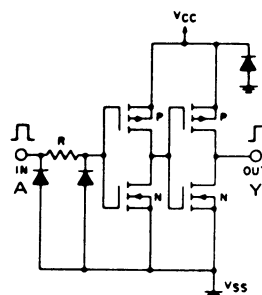


**SCHEMATIC DIAGRAMS**

**SCL4049UB**



**SCL4050B**



Note: Refer to "SCL4000B SERIES FAMILY SPECIFICATIONS" for remaining Dynamic & Static Characteristics, and, for recommended and maximum operating conditions.